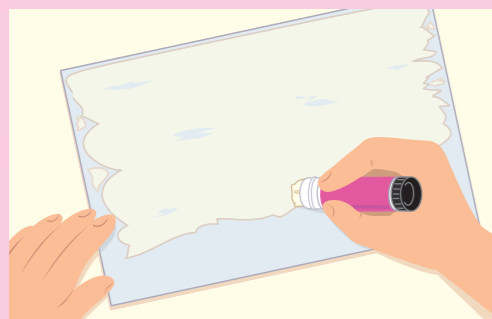


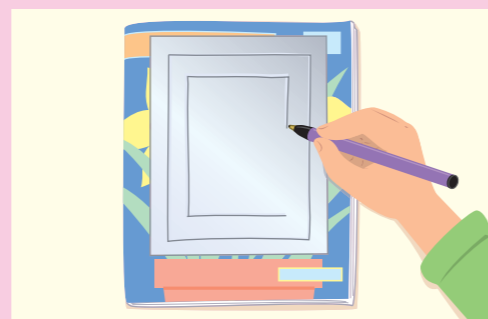
Shiny picture frame



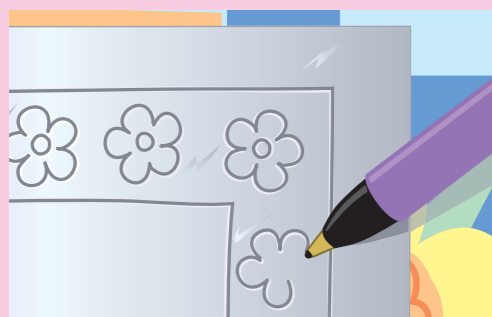
1. Cut a large piece of kitchen foil. Using a glue stick, spread glue all over the non-shiny side, then fold the foil in half.



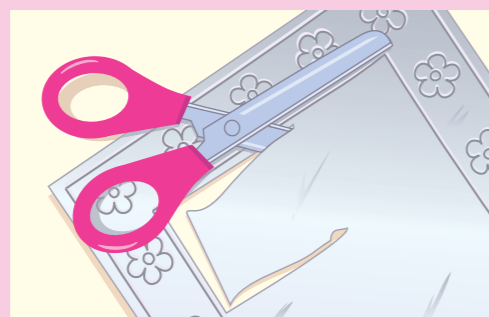
2. Rub the foil so that the two layers stick together and the surface is smooth. Then, put the folded foil onto an old magazine.



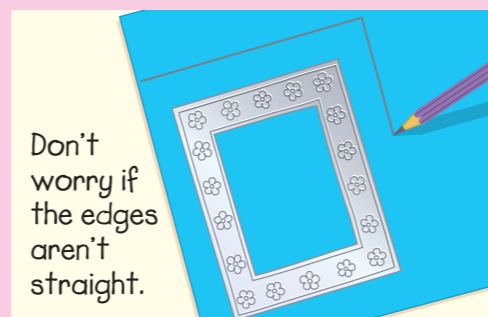
3. Pressing hard with a ballpoint pen, draw a rectangle on the foil, then draw a smaller rectangle inside it, like this.



4. Draw lots of flowers between the lines. Then, cut around the rectangles with scissors, a little way from the outside line.

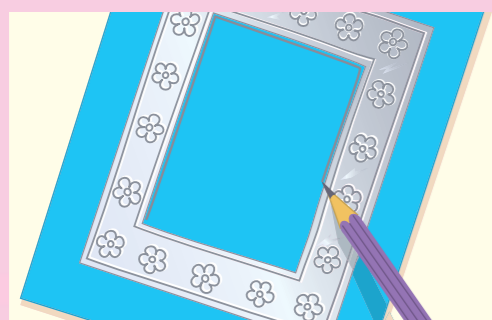


5. Push a ballpoint pen through the foil, to make a hole for your scissors. Then, cut all the way around the inside line, to make a frame.

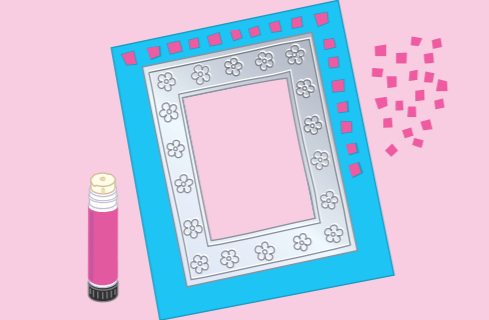


Don't worry if the edges aren't straight.

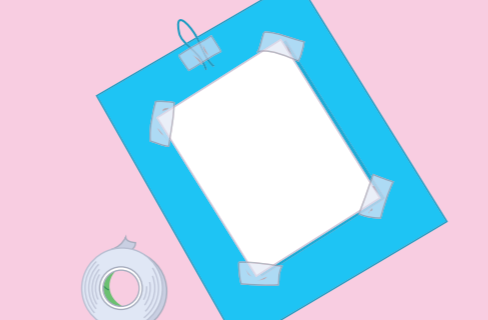
6. Lay the foil frame onto some thin cardboard and draw a bigger rectangle around it, like this. Then, cut out the shape.



7. Lay the foil frame onto the cardboard again and draw around the hole. Push a pen through the shape you've drawn.



8. Cut out the shape, then glue the foil frame onto the cardboard one. Cut out lots of paper squares and glue them onto the frame.



9. Lay the frame on a picture, then turn them both over and tape the picture in place. Tape a loop of string at the top.



You could draw flowers and leaves on foil and cut them out separately.



You could put a picture of yourself in the frame.



Or you could paint a picture to go in the frame.

