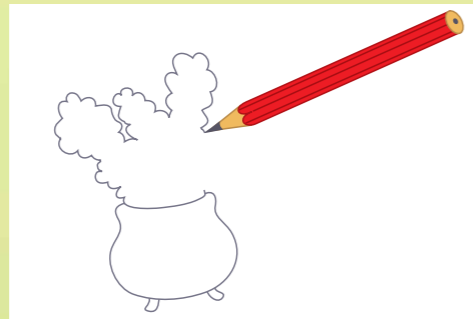
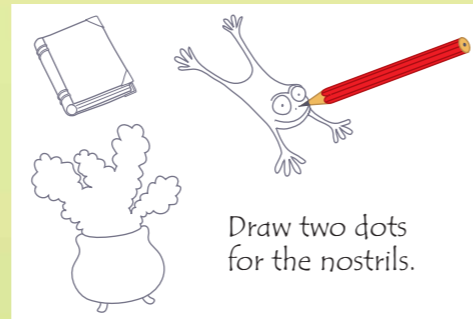


Magic spell chain



1. Draw a round cauldron on a large piece of thick white paper. Add two feet at the bottom and steam coming from the top.



2. Draw a spell book a little way from the cauldron. Then, draw the body and legs of a leaping frog. Add two round eyes and a face.



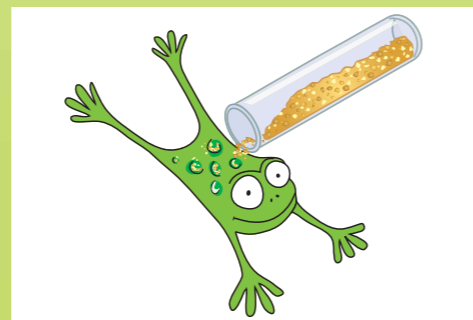
3. Draw a glass bottle of magic potion with a cork in the top. Then, draw a circle for a bat's head. Add its wings, ears and face.



4. Using a thin paintbrush, fill in the pictures with paints. When they are dry, paint details such as pages in the book and bubbles.



5. Leave the paint to dry completely. Then, carefully go over all the pencil lines with a thin black felt-tip pen, like this.



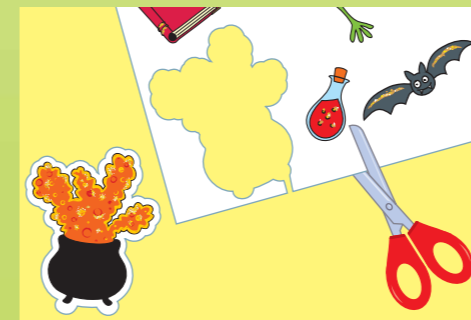
6. Using the tip of a thin paintbrush, brush lines and spots of white glue on the pictures. Then, sprinkle the wet glue with glitter.



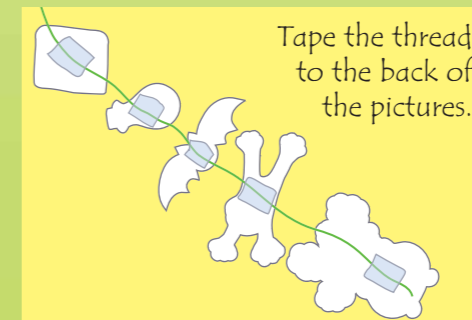
Use the ideas in these chains to make your own spell chain.



You can add any number of pictures to a spell chain.



7. When the glue is dry, gently shake off any excess glitter. Then, cut out all the pictures, leaving a white border around them.



8. To make the chain, tape the pictures onto a long piece of thread. Tape the cauldron at the bottom and the other pictures above it.